



S | °

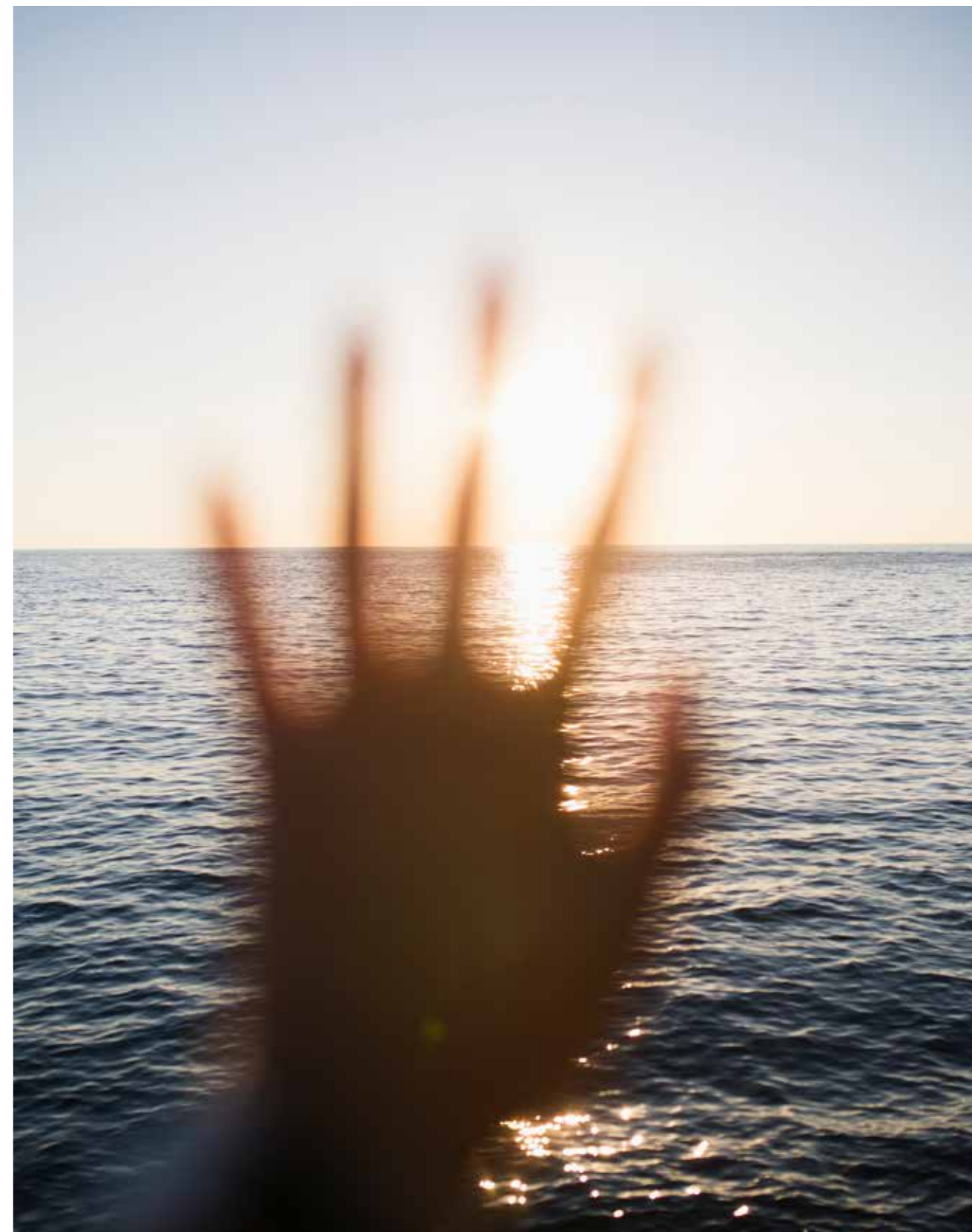
SOUTHSCAPE



WELCOME TO
SOUTHSCAPE
YOUR RIVERFRONT
RESIDENCE WHERE
EVERYDAY IS
EXTRAORDINARY.

Southscape, right at the heart of the South Perth Peninsula, is the gateway to the kind of riverfront lifestyle you've only ever dreamed about. A world of wonderment awaits, ready to charm and captivate at every turn.

The design, inspired by the beauty of its surroundings, panders to your every mood, your every need, and your every wish. Comfortable and connected, Southscape offers a way of life that prioritises convenience, exudes luxury and style and revels in an iconic and vibrant location.



A RIVERFRONT LIFESTYLE

LAID-BACK
LUXURY



KITCHEN DESIGN FINISHES



Southscape blends modern contemporary design seamlessly with laid-back luxury, maximising the connection with the magnificent views at every opportunity.

Reflecting the perfect balance of the cool and calm natural surroundings, and the sophistication and excitement of its urban location, the design seeks to create warm and inviting spaces.



SIMPLY BEAUTIFUL - INSIDE AND OUT

Inspired by the beautiful riverside location, Southscape aims to maximise the connection with the natural landscape, exploiting its orientation to fill living spaces with light and capitalise on views of the city, the river and Kings Park.

Showcasing a high level of finishes, a focus on the clever and efficient use of space and a seamless thread between indoor and outdoor living, Southscape is all about connecting to a lifestyle that feels custom made just for you.





Reserve front row seats to an enthralling daily encore of world-class spectacles, including stunning sunsets over the river, twinkling city lights, and mesmerising views of Kings Park.



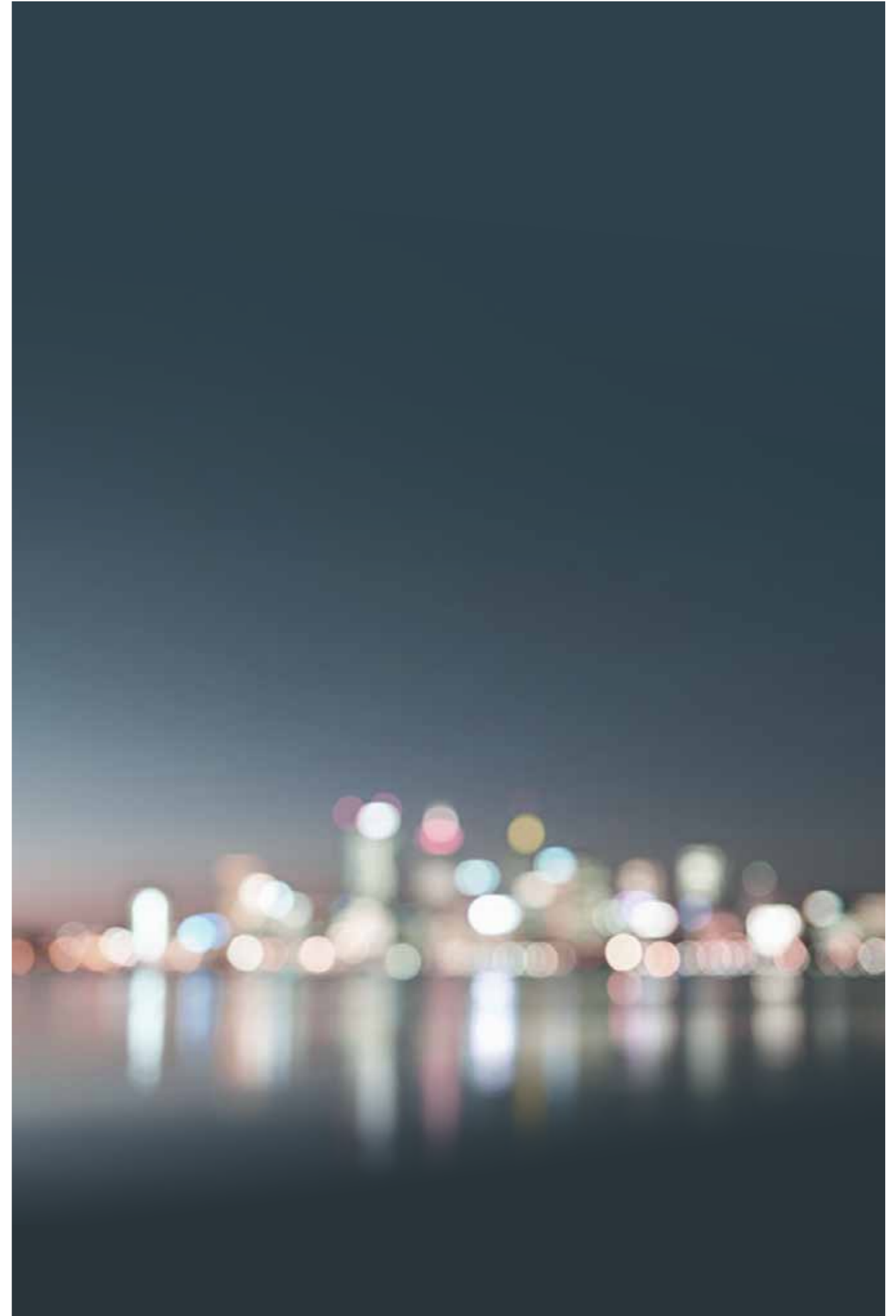


THE SUBURB THAT ALWAYS FEELS LIKE HOME

With an enduring reputation for luxury, South Perth has always been an iconic inner-city location famous for its foreshore, bustling retail precincts and, of course, the more exotic residents residing at Perth Zoo.

Separated from the City of Perth by a 1.5 km section of the Swan River, South Perth is one of those charming places that always feel like home. Vibrant and inviting, it's a family friendly haven for tourists and locals alike, with a diverse range of eateries and bars, an abundance of pristine picnic spots, never ending ways to get active and a regular calendar of events and festivals.

Beyond the obvious riverside attractions, you'll find leafy suburban streets and a warm and welcoming community. It's that dream location where chic and cultured meets comfort and convenience.



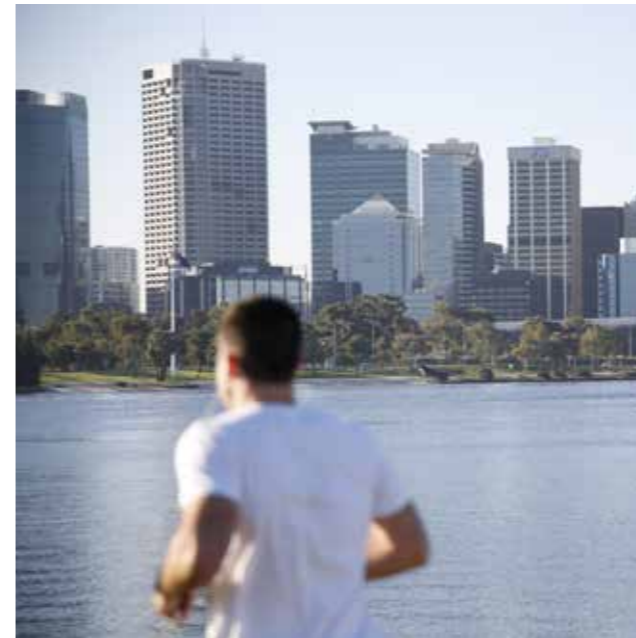
JUST BEYOND YOUR DOORSTEP

Feel connected with a vibrant and chic South Perth lifestyle, with the next adventure just a walk, cycle, bus or ferry ride away.



PLACES

- South Perth Esplanade
- South Perth Bowling Club
- Historical Old Mill
- Coco's
- Mends St Cafe
- Perth Zoo
- Royal Perth Golf Club
- Coode St Jetty
- Gusto



EXPLORE



WALK

- 8mins to Mends St Jetty
- 5mins to Mends St Cafe
- 12mins to Perth Zoo
- 20 mins to Southshore Shopping Centre



CYCLE

- 20km river loop
- 12km to Kings Park
- 10km to Matilda Bay Brewing



FERRY

- 10mins to Elizabeth Quay



Fremantle

Cottesloe Beach

Royal Perth Yacht Club

5 km

University of Western Australia

Sir Charles Gairdner Hospital

2 km

Royal Perth Golf Club

Swan Brewery

1 km

Perth Zoo

Mends Street Shopping Precinct

Kings Park

Mends Street Jetty

Perth Convention Centre

Elizabeth Quay

Elizabeth Quay Train Station

Perth CBD

◀ Crown Entertainment Complex - 15 mins

°|S

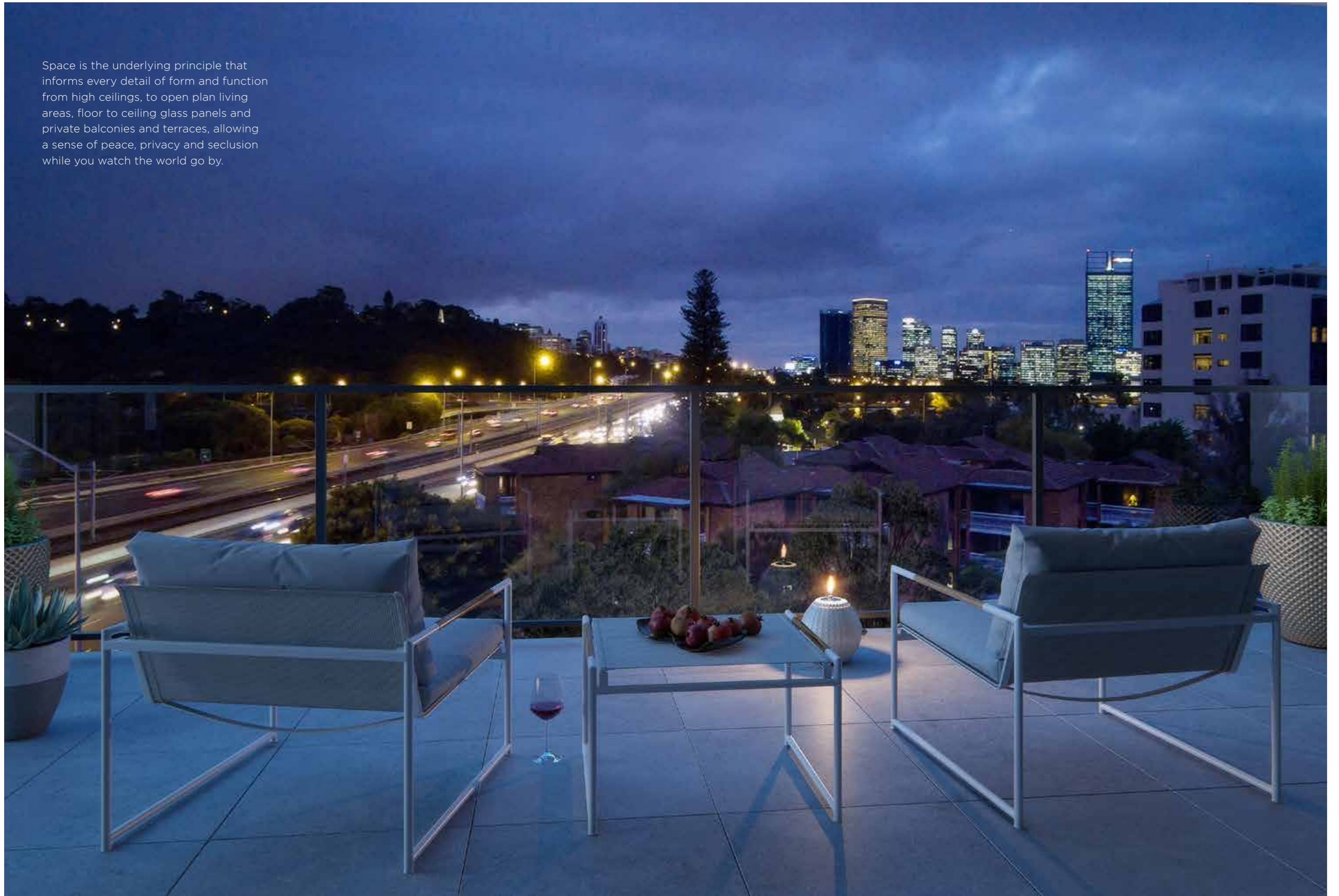
OPEN UP TO
THE WORLD
OUTSIDE



°|S

|| MELVILLE PARADE

Space is the underlying principle that informs every detail of form and function from high ceilings, to open plan living areas, floor to ceiling glass panels and private balconies and terraces, allowing a sense of peace, privacy and seclusion while you watch the world go by.



LIGHT-FILLED LUXURY. SERENE SIMPLICITY



Designed by Matthews & Scavalli Architects, Southscape represents cutting-edge contemporary design in the context of one of Perth's most exclusive and well-loved suburbs.

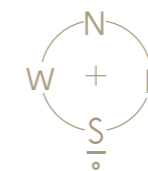
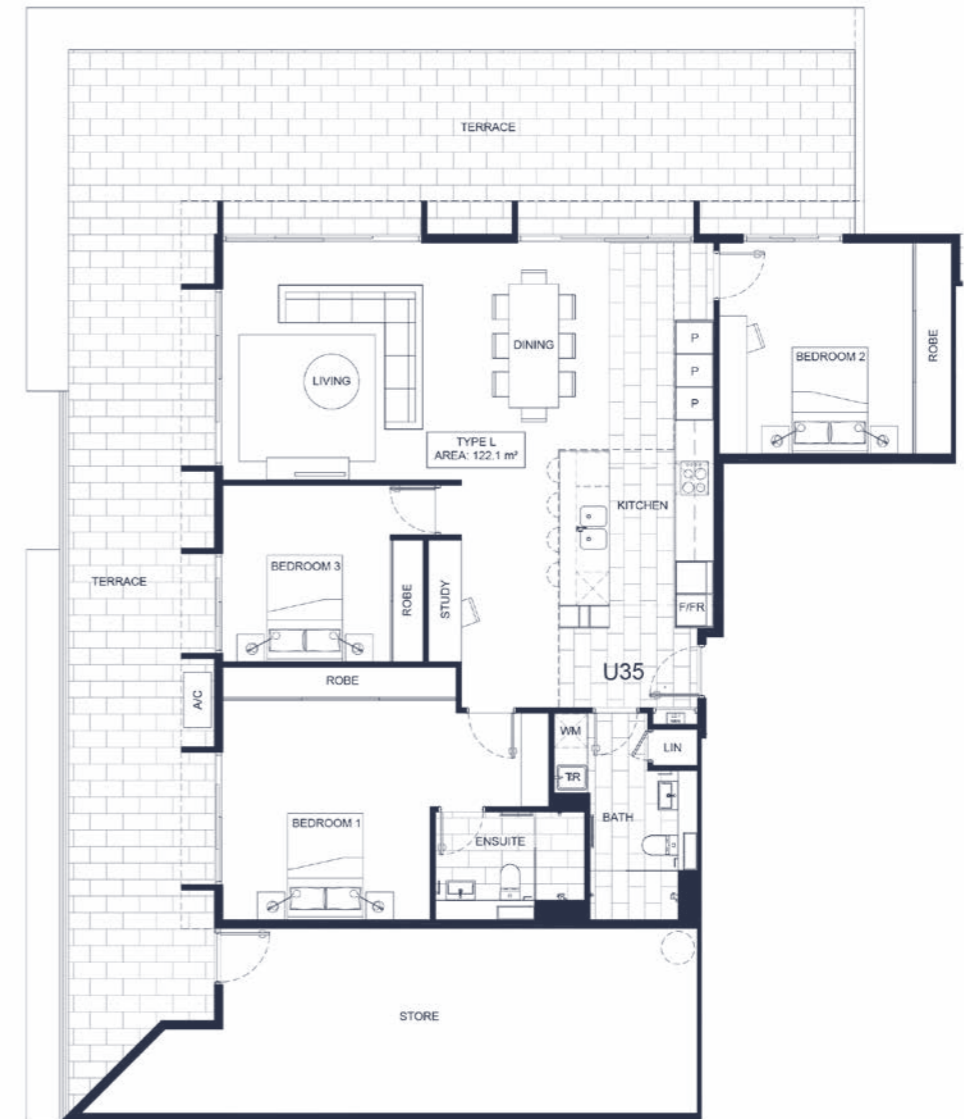
Consisting of a mix of one bedroom, one bathroom apartments, two bedroom, two bathroom apartments

and three bedroom, two bathroom apartments, spread over four floors, Southscape invites you to drink in the inner-city vibes and relish in the choice and the freedom that comes with living in the incredibly vibrant South Perth community.

PENTHOUSE APARTMENT TYPE L

3 BED • 2 BATH • STUDY NOOK

Internal	122.1m ²
Balcony	86.9m ²
Store	9m ²
Car bay	2



APARTMENT TYPE C

2 BED • 2 BATH • STUDY NOOK

Internal	84.3m ²
Balcony	14.6m ²
Store	Yes
Car bay	1 or 2







S | .
SOUTHSCAPE

